

SOVEREIGN
BUSINESS
JETS

2010 Embraer Phenom 100



2010 Embraer Phenom 100

OVERVIEW

Registration: G-ITSU

Serial Number: 5000185

Total Time Airframe: 1,216 hours

Year of Manufacture: 2010

Engine Model: 2 x PW617F-E

Engine Hours: #1 1,216 hours / #2 1,216 hours

Operational Certification Status: EASA EU Ops Compliant

Price: \$2.1M USD



2010 Embraer Phenom 100

HIGHLIGHTS

Premium Entry Door

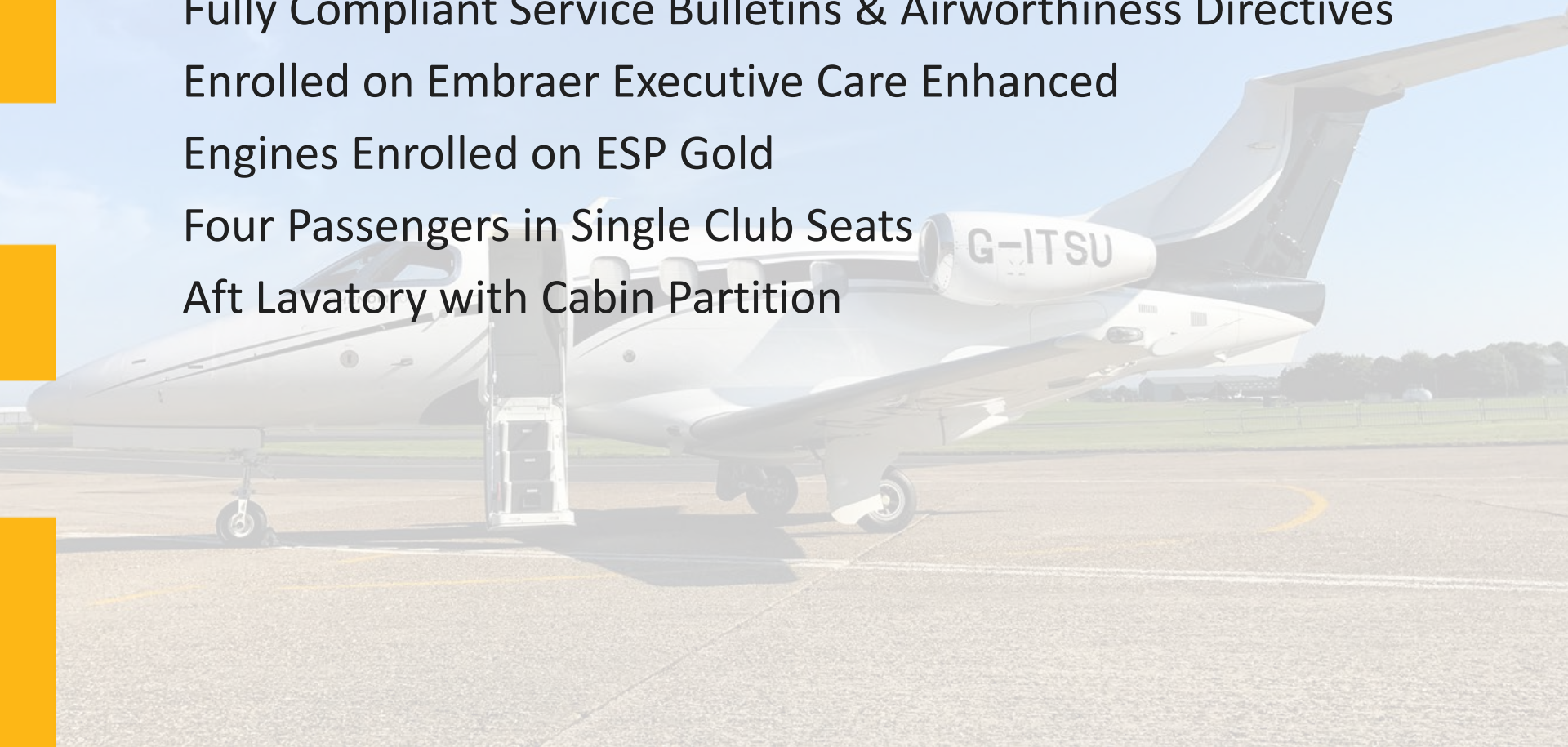
Fully Compliant Service Bulletins & Airworthiness Directives

Enrolled on Embraer Executive Care Enhanced

Engines Enrolled on ESP Gold

Four Passengers in Single Club Seats

Aft Lavatory with Cabin Partition



2010 Embraer Phenom 100

AIRFRAME

2010 Airframe

1,166 hours TTAF

Enrolled in EEC Enhanced

ENGINES

Pratt & Whitney Canada PW617F-E x2

Engine Hours: #1 1,166 hours / #2 1,166 hours

Dual-channel FAADEC

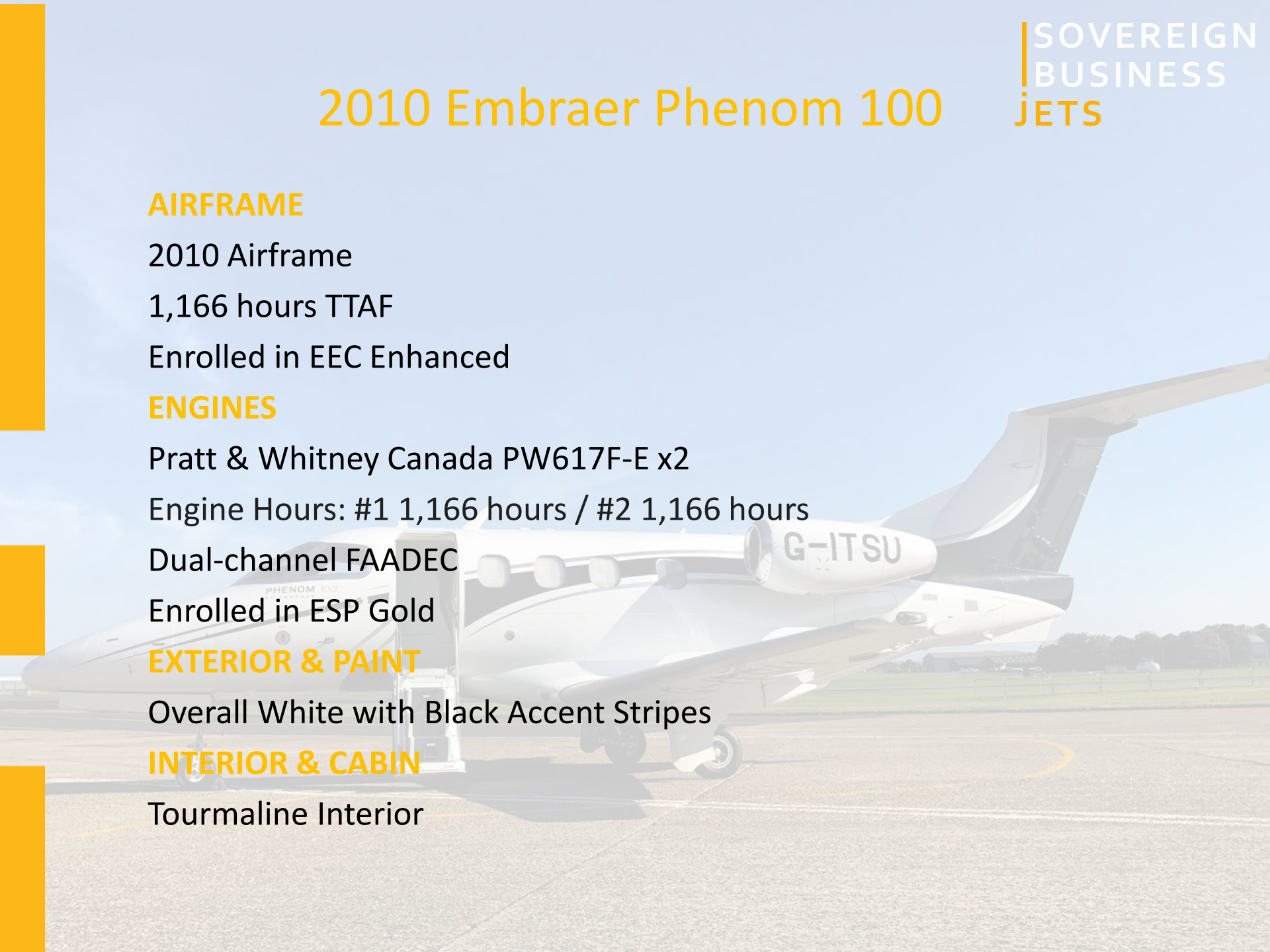
Enrolled in ESP Gold

EXTERIOR & PAINT

Overall White with Black Accent Stripes

INTERIOR & CABIN

Tourmaline Interior



2010 Embraer Phenom 100

AVIONICS

Garmin 'Prodigy' G1000 (Triple 12.4" LCD Displays

Integrated Central Maintenance Computer

Engine Health Monitoring Capability w/Synoptic View

Crew Alerting System (CAS)

Flight Management System (FMS)

Required Navigation Performance (RNP)

Vertical Navigation (VNAV)

Satellite Weather & Radio Receiver

Cockpit Voice & Data Recorder (CVDR)

Wide Area Augmentation System (WAAS)

Dual Mode-S Transponders with Diversity

Terrain Awareness & Warning System (TAWS)

2010 Embraer Phenom 100

ADDITIONAL FEATURES

Weather Radar with Overlay

Electronic Jeppesen Charts with ChartView

DME

ADF

TCAS1

LED Lighting

Premium Passenger Door

Sheepskin Cockpit Seats

Smoke Goggles

Crew Portable Breathing Equipment

Cockpit Flood Light, Sunshade & Sun Visor



2010 Embraer Phenom 100

FURTHER INFORMATION

If you require more information please contact Ross Bunyard:

T: +44 (0) 1503 240 543

M: +44 (0) 7768 803 476

E: aircraftsales@sovereign.aero

The aircraft can be viewed at our London Biggin Hill Airport facility

castleairgroup.com
sovereign.aero

London

+44 (0) 1959 580 777

Diamond House, Hangar 525
Churchill Way, Biggin Hill Airport
Kent, TN16 3BN

SOVEREIGN
BUSINESS
JETS



SOVEREIGN
BUSINESS
JETS



SOVEREIGN
BUSINESS
JETS

